



The AEC APP compiles information on nationwide environmental radiation reading and protective actions during a nuclear accident. Please feel free to download and make use of it.



AD

核子事故應變指南

Protective Actions Guidelines
for Nuclear Emergency

The guidebook compiles protective actions to be taken during a nuclear accident, including shelter in house, take iodine tablets and evacuation/reception, providing the general public with information on self-protection.



Atomic Energy Council, Executive Yuan
<http://www.aec.gov.tw>
The Guardian of Nuclear Safety.



The Atomic Energy Council of the Executive Yuan cares about you.

Issued by | Atomic Energy Council, Executive Yuan

Address | 2F., No. 80, Section 1, Chenggong Road, Yonghe District, New Taipei City

Tel | (02) 8231-7919

Date of publication | October 2018 (Second Edition)

All rights reserved. Those who wish to use all or part of the content of this guidebook must ask for consent or written authorization from the issuing agency.

Protective Actions Guidelines for Nuclear Emergency



Atomic Energy Council
The Guardian of Nuclear Safety



Nuclear Power Plant

Emergency Planning Zone (EPZ)

0 km

8 km



School



Assembly Point



Residence



Reception School



Reception Centers

Contents

Emergency Notification 4

Shelter In House 6

Take Iodine Tablets 10

Evacuation Order 12

Schools Evacuation 16

Area Map 18

Actions Guidances During Nuclear Emergency 24

Radiation Protection 26

Whom Should I Ask If I Have Questions? 30

My Family Evacuation Plan 31

Contacts 32

Emergency Response To Nuclear Accident
Protective Actions For The General Public



Shelter In House



Take Iodine Tablets



Evacuation



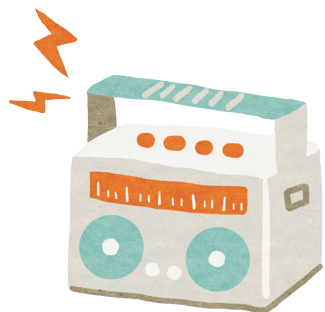
AEC provides leaflets of "What to Do in a Nuclear Emergency" in different languages, please feel free to visit the AEC website (www.aec.gov.tw).

Emergency Notification

The government will notify people through all kinds of media outlets.



Mobile Broadcast



Radio



Text Message



Internet



TV Media

Emergency Siren



★ Please check the AEC App for more information of the alarm!

Issue An Alert: Ring Stop Broadcasts

1s	1s		In Mandarin, Taiwanese and English	1s	1s		In Mandarin, Taiwanese and English
Alarm Repeat 25 times, lasting for 50 seconds				Alarm Repeat 25 times, lasting for 50 seconds			
About 40 seconds				About 40 seconds			

End of An Alert: Ring Broadcasts

1 prolonged sound	In Mandarin, Taiwanese and English	1 prolonged sound	In Mandarin, Taiwanese and English
50-second alarm		50-second alarm	
About 25 seconds		About 25 seconds	

Shelter In House (Outdoors)



Quickly go inside a nearby building and pay close attention to the latest information.



Roll up windows of the vehicle.
Shut off outside ventilation of the air conditioner.
Turn on the radio to get the latest information.
Go home and stay inside, or leave the affected area immediately.

Shelter In House (In Home)



Close all doors and windows and paste the sign reading "I am instructed to Shelter In House" on doors or windows.

Shut off outside ventilation of the air conditioning facilities.

Wash your hands and face immediately after entering your house.

Put food and water in sealed containers and store them tightly.

Turn on television or radio and pay close attention to the latest information.



100%

80%
OFF

Reinforced concrete structures can attenuate 80% of radiation.



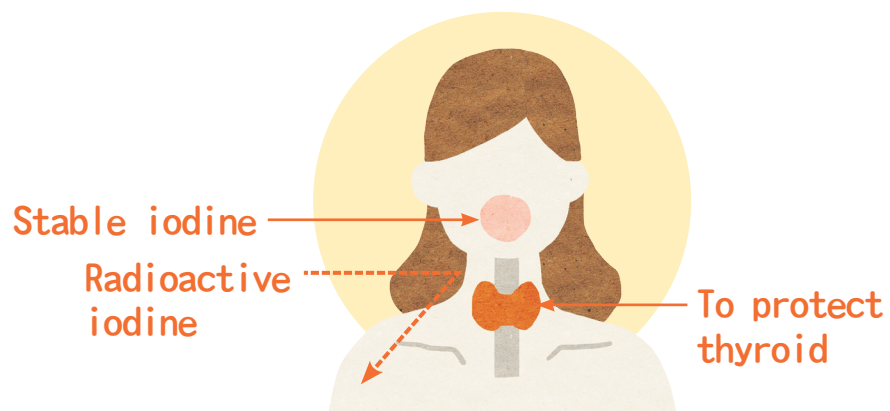
Take Iodine Tablets

The timing of taking iodine tablets:

Only on the advice of the authorities

The purpose of taking iodine tablets:

For the body to absorb the stable iodine in advance, lest the radioactive iodine should accumulate inside, so that the thyroid is protected.

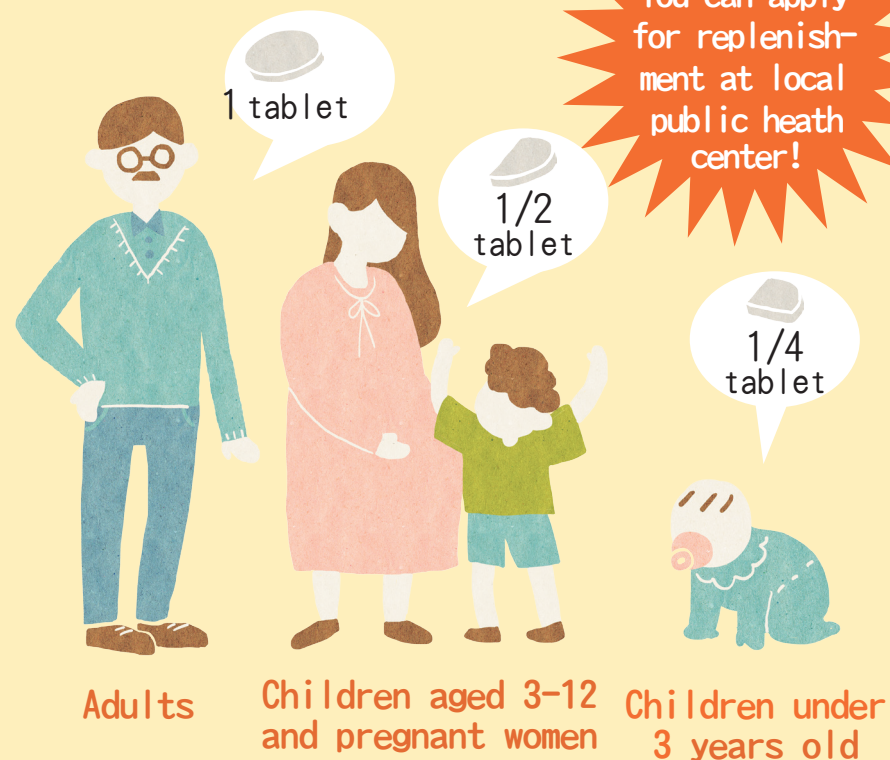


No

Do not take iodine tablets on your own without the instructions of the authorities.



Dosage :



Pay attention to the following when taking iodine tablets:

1. Anyone who is allergic to iodine should not take it.
2. Newborn and pregnant women should consult doctor before taking iodine tablets.
3. Iodine tablets can be grinded into powder and mixed with orange juice, sugar water or jam for administration to children.
4. Adults older than 40 years old are not suggested to take iodine tablets unless the authorities request.
5. Do not take iodine tablets for over 10 consecutive days. Please read the instructions in the package or consult a doctor on how to take iodine tablets.

Evacuation Order

Follow the latest instructions of government and prepare calmly for evacuation.

Please paste a sign reading “I need help” on windows or doors if there are physically disabled individuals needing help.
The government will come and provide assistance.



Before Leaving Your House



Turn Off Natural Gas



Unplug All Appliances



Lock All The doors



You can leave by your own car.



Assembly Points or Nearby Bus Stops



Contamination Screening Station

- Contamination Detection and Decontamination of People And Cars
- Registration For Management
- First Aid



Reception Centers, Relatives or Friends' House and Hotels



Secure measures to contact family members in emergency during non-emergency times.

★You can use the messaging platform “1991 Safety Bulletin Board” of the National Fire Agency to leave messages and let others know that you are safe.

Have You Prepared Your Disaster Supply Kit?

Always keep a supply kit for nuclear emergency
The following items are suggested to go with you:

★ The supply kit should be placed in an accessible location.
You should constantly check and update the content inside.

☐ Valuable Items

Passbook, stamp, cash, important identity certification, etc



☐ Food

Drinking water, instant noodles, canned food, cookies, chocolate, etc



☐ Medications

Frequently-used prescription drugs, first aid kit, iodine tablets, etc



☐ Clothes

Sweater, jacket, coat, undergarments, small blanket, etc



☐ Protective Actions Guidelines for Nuclear Emergency



☐ Electronic Devices

Flashlight, batteries, cellphone, radio, charger, etc



☐ Personal Items

Items for personal hygiene, hearing aids, dentures, glasses for presbyopia, etc



☐ Outdoor Equipment

Surgical mask, whistle, raincoat, shoes, etc



☐ Baby Items

Infants formula, bottles, diapers, etc



Schools Evacuation

What should students do at school?

Students at school:

Students should be precautionarily evacuated to host schools using vehicles specially designated for nuclear accident evacuation.

Parents:

Pick up children from the original schools or take children home from host schools after registration.



For more information about host schools, Contamination Screening Stations and Reception Centers, please check out the AEC APP.



Contamination Screening Station
Shimendong Parking Lot



比例尺: 0 1 2 3 公里



Jinshan Nuclear Power Plant

Contamination Screening Station
at Cianshuei Bay Parking Lot



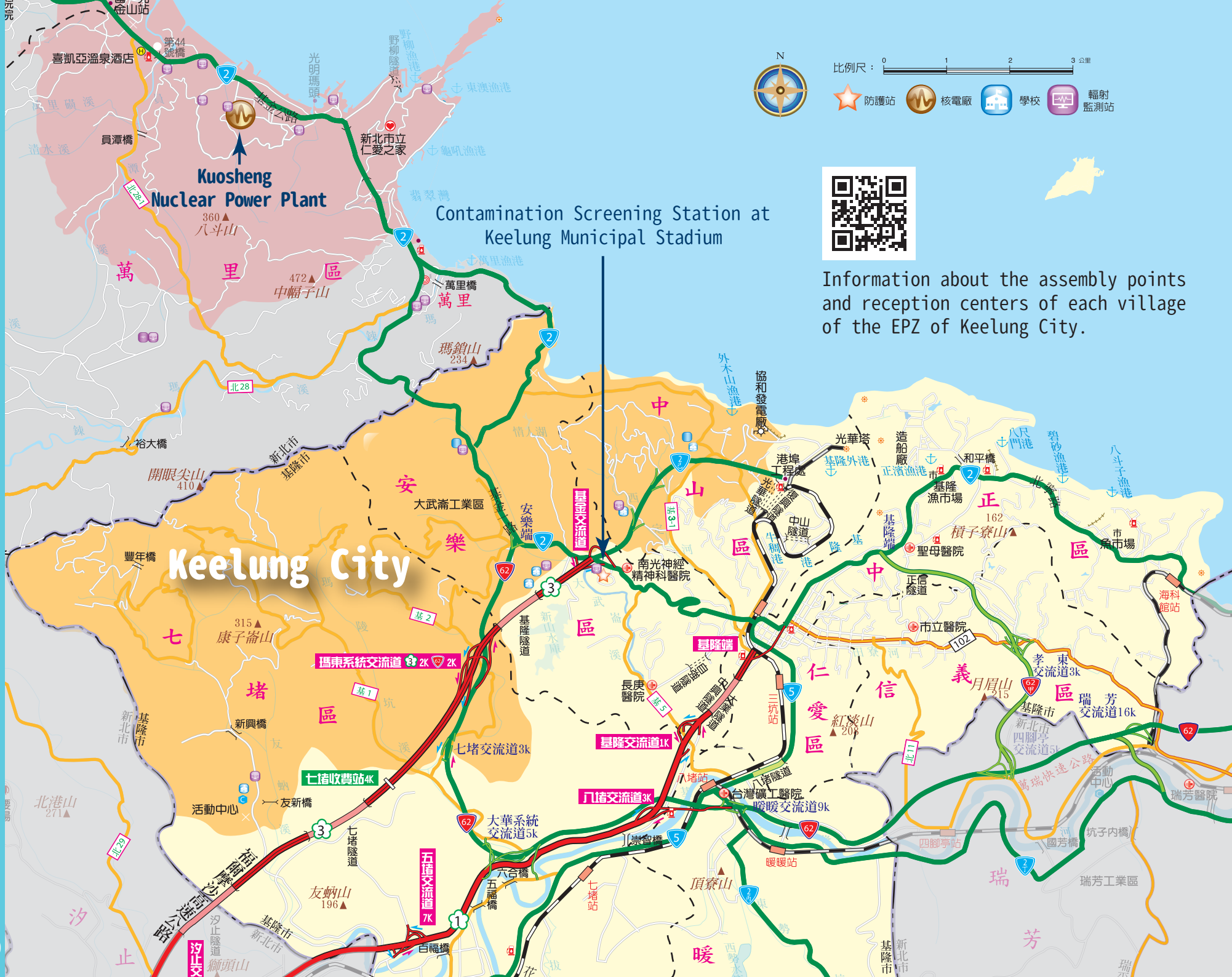
Information about the assembly points
and reception centers of each village
of the EPZ of New Taipei City.

Kuosheng Nuclear Power Plant

Contamination Screening Station
at Feicuiwan Club

Contamination Screening Station
at Keelung Municipal Stadium

New Taipei City





Actions Guidances During Nuclear Emergency



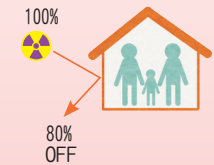
Nuclear accidents happened with
no radiation released

A nuclear accident can be divided into different phases. Taiwan government adopts a strategy of Advance Dispatching, and carries out a precautionary evacuation under different phases of nuclear accident.



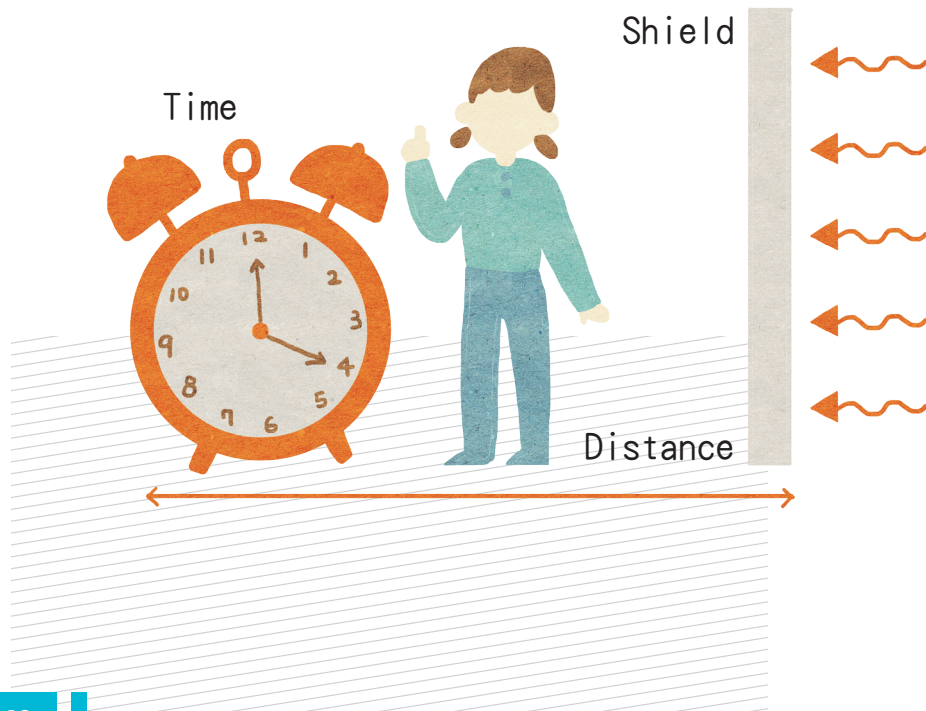
Nuclear accidents
deteriorated with
radiation released

Region And Facilities		Alert	Site Area Emergency		General Emergency	
Emergency Planning Zone (EPZ)		Pay attention to the latest news 	Siren/ Shelter in house / Prepare for evacuation 	Within 3km Precautionary evacuation 	Within 3-8km Prepare for Evacuation/ Pay attention to the latest updates 	Outside 8km Shelter in House/ Pay attention to the latest updates
Facilities	Recreative Area, Resorts and Hotels	Close recreational facilities/ Direct tourists to leave 	Continue evacuation 		Continue evacuation 	
	Schools	Pay attention to the latest updates/ Prepare for evacuation 	Siren/ Precautionary evacuation 		Continue evacuation 	
	Hospitals, Nursing homes	Pay attention to the latest updates/ Prepare for evacuation 	Siren/ Precautionary evacuation 		Continue evacuation 	



Those who have not received the evacuation order should shelter in house, which can attenuate 80% of radiation.

TDS Principle



Shortening the Time (T):

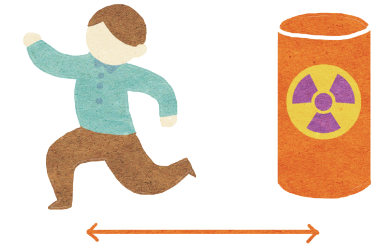
Shortening the time of exposing to radiation is the primary principle of radiation protection.



Increasing the Distance (D):

Keep away from the source of radiation.

The intensity of radiation is inversely proportional to the square of the distance from the source. That is, the intensity of radiation will decline to 1/4 if you double the distance between you and the source. Examples include leaving the affected area.



Appropriate Shield (S):

Shield can attenuate radiation, thus lowering the impact of health. Examples include going indoors and closing doors and windows.

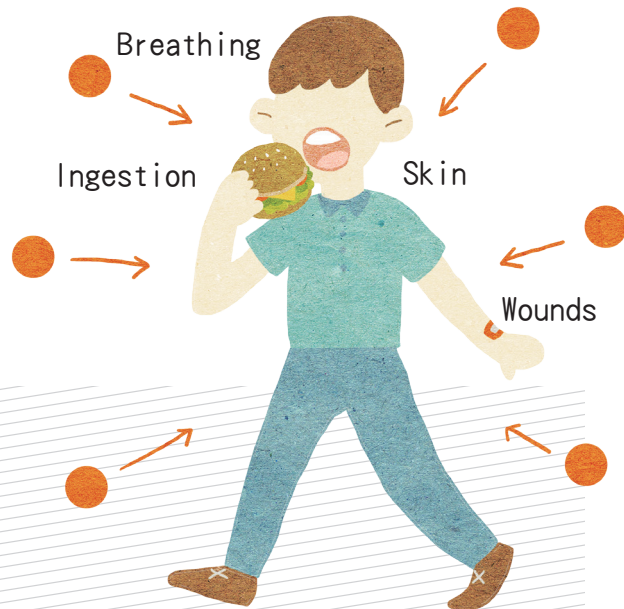


Knowledge Of Radiation Protection

Radiation Protection-Internal Exposure

Obstruction:

Shortening the time exposing to radiation and refraining from eating or staying in affected-areas can help prevent radioactive materials from entering your body via breathing, ingestion, skin or wounds.



Metabolism:

If radioactive materials have entered your body, drink more water to increase your metabolism and seek help from a doctor.



Decontamination:

Decontamination can effectively lower the amount of radioactive materials taken in or breathed in, such as washing your hands and face, or changing clothes.



Whom Should I Ask If I Have Questions?

The better the preparation,
the more effective the protection!

Atomic Energy Council
always be with you!

AEC Nuclear Safety Duty Center

0800-088-928

_____ City / County Disaster Response Center:

_____ Township / District Office:

_____ Fire Brigade:

_____ Police Station:

_____ Village Office:

_____ School (Currently Study At):

My Family Evacuation Plan

We live in

Village

Address

- ☐ Within 3 kilometers away from nuclear power plant
- ☐ Within 3-8 kilometers away from nuclear power plant

★ Check out the AEC APP for more information on distance to nuclear power plants and refer to pages 24-25 for preventive actions.

1991 Safety Bulletin Board. <https://www.1991.tw/>

Designated Phone Number

Password

Assembly point for evacuation bus is

The nearest Contamination Screening Station is

The designated reception center is

The host school is

Contacts

Family Members:

Grandpa	Name	Tel
Grandma	Name	Tel
Father	Name	Tel
Mother	Name	Tel
Son	Name	Tel
Daughter	Name	Tel

Contact Information Of Family And Friends:

Tel
Tel
Tel
Tel
Tel
Tel
Tel