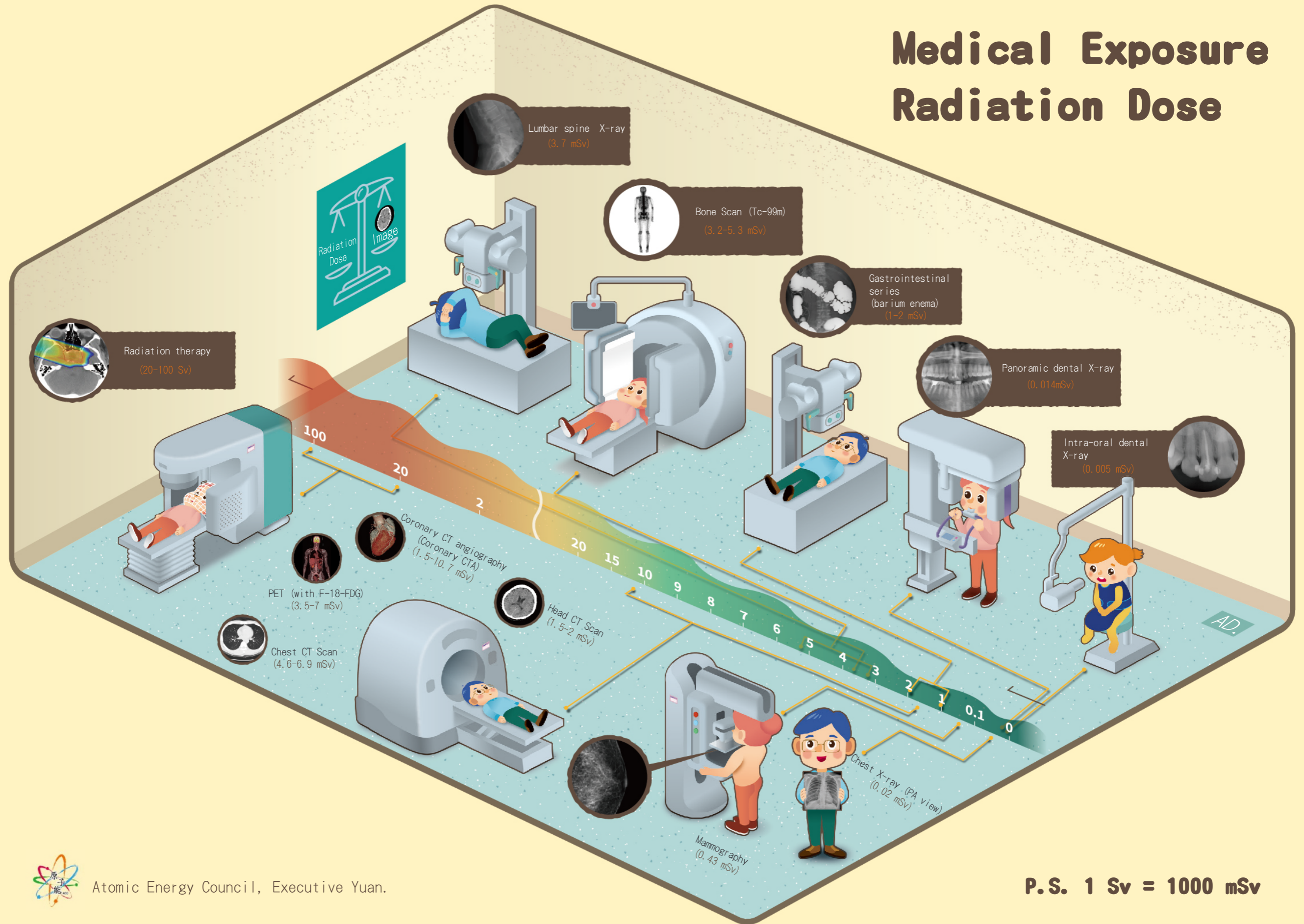


Medical Exposure Radiation Dose



Reference :

1. Population dose from medical exposure in Taiwan for 2008. *Medical Physics* (2011) Vol. 38, No. 6, pp. 3139–3148
2. Patient radiation dose from chest X-ray examinations in the west bank – Palestine. *Radiation Protection Dosimetry* (2018) Vol. 178, No. 3, pp. 298–303
3. Patient knowledge regarding radiation exposure from spinal imaging. *The Spine Journal* (2017) Vol.17, No.3, pp.305–312
4. Radiation dose affected by mammographic composition and breast size: first application of a radiation dose management system for full-field digital mammography in Korean women. *World Journal of Surgical Oncology* (2017) 15:38
5. Patient radiation exposure during general fluoroscopy examinations. *Journal of Applied Clinical Medical Physics* (2014) Vol. 15, No. 2, p.262–270
6. International variation in radiation dose for computed tomography examinations: prospective cohort study. *British Medical Journal* (2019) 364:k4931
7. Automated tube voltage selection for radiation dose and contrast medium reduction at coronary CT angiography using 3rd generation dual-source CT. *European Radiology* (2016) 26, 3608–3616
8. Low tube voltage prospectively ECG-triggered coronary CT angiography: a systematic review of image quality and radiation dose. *The British Journal of Radiology* (2018) Jul;91(1088) :20170874
9. Radiation Dose to Patients from Radiopharmaceuticals: A Compendium of Current Information Related to Frequently Used Substances. ICRP 128 (2015)
10. <http://www.snmfi.org/ClinicalPractice/doseTool.aspx?ItemNumber=11216&navItemNumber=11218>